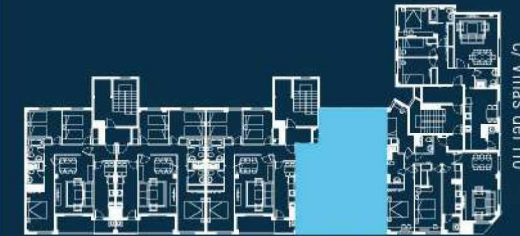
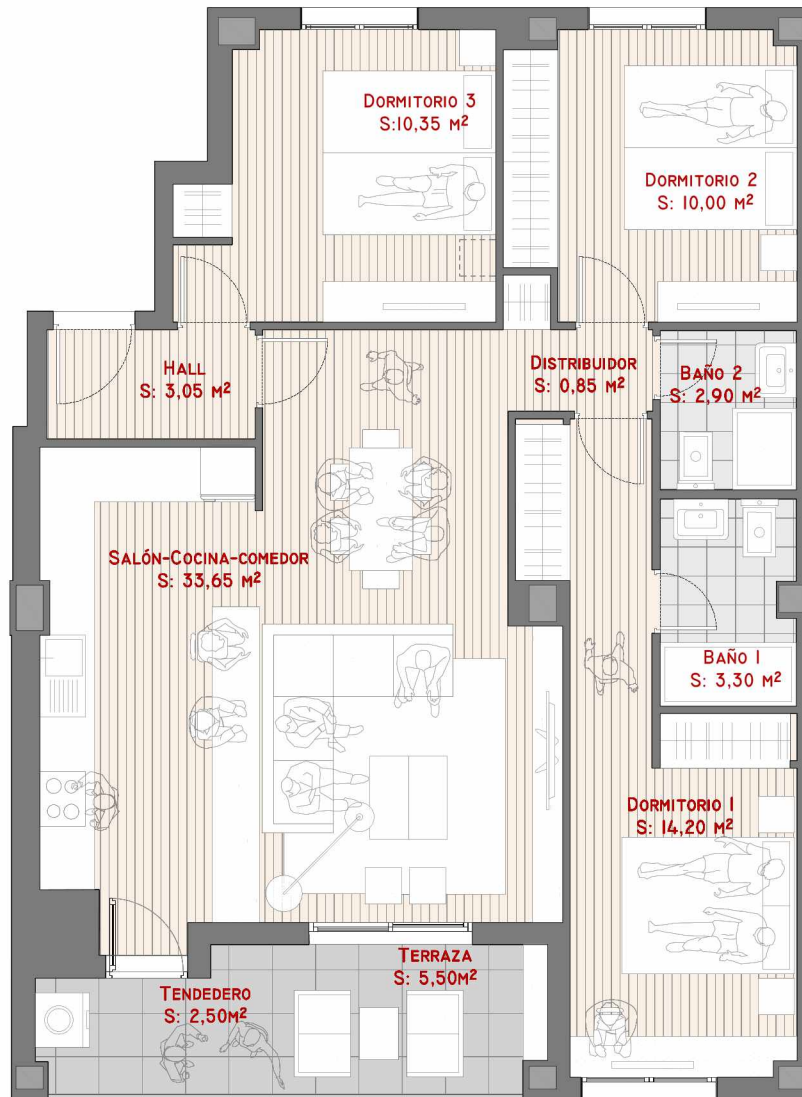




Portal 2 1°-5°A



c/ ganados del salobral



3 dormitorios



2 baños



1 trastero



1 pza garaje

SUPERFICIE ÚTIL 86,30m²

SUPERFICIE CONSTRUIDA 95,53m²

TOTAL CONSTRUIDO CON Z.C. 117,22m²

Promueve: